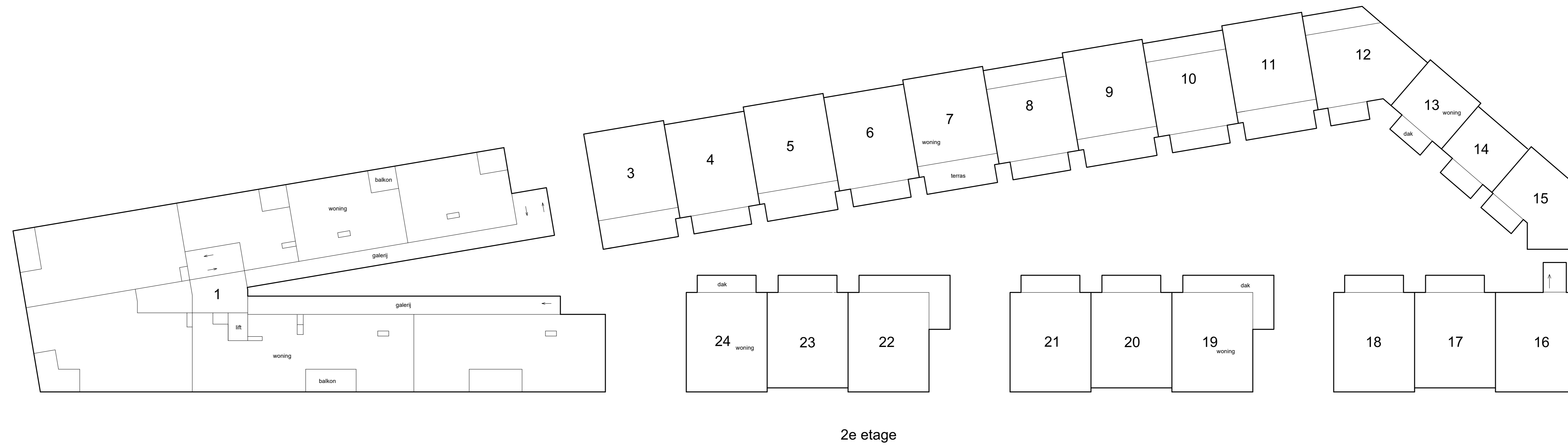


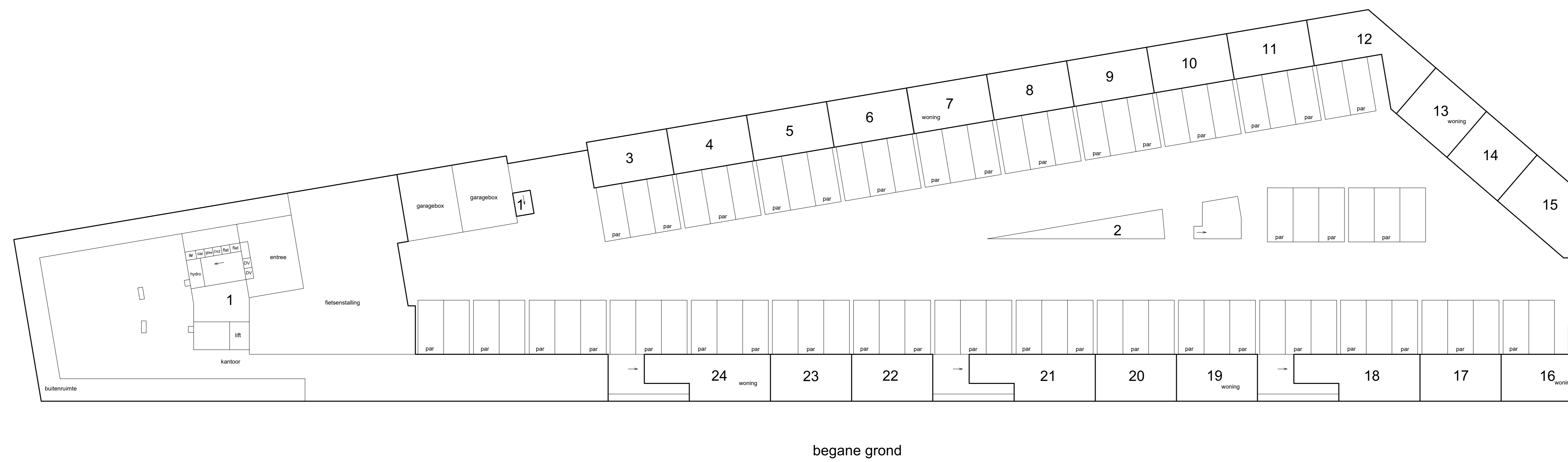
Schaal 1 : 200
□ = Gemeenschappelijk
Tekening bestaat uit 3 bladen
Blad 1



2e etage

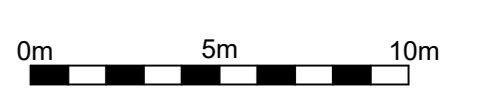
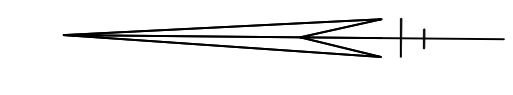


1e etage



begane grond

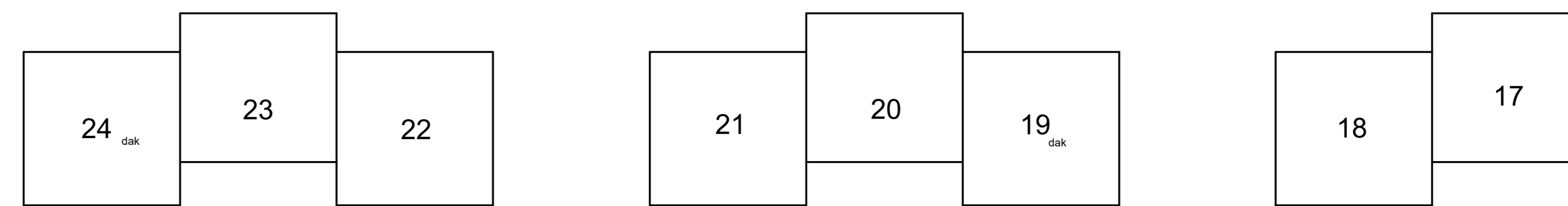
Situatie 1 : 1000



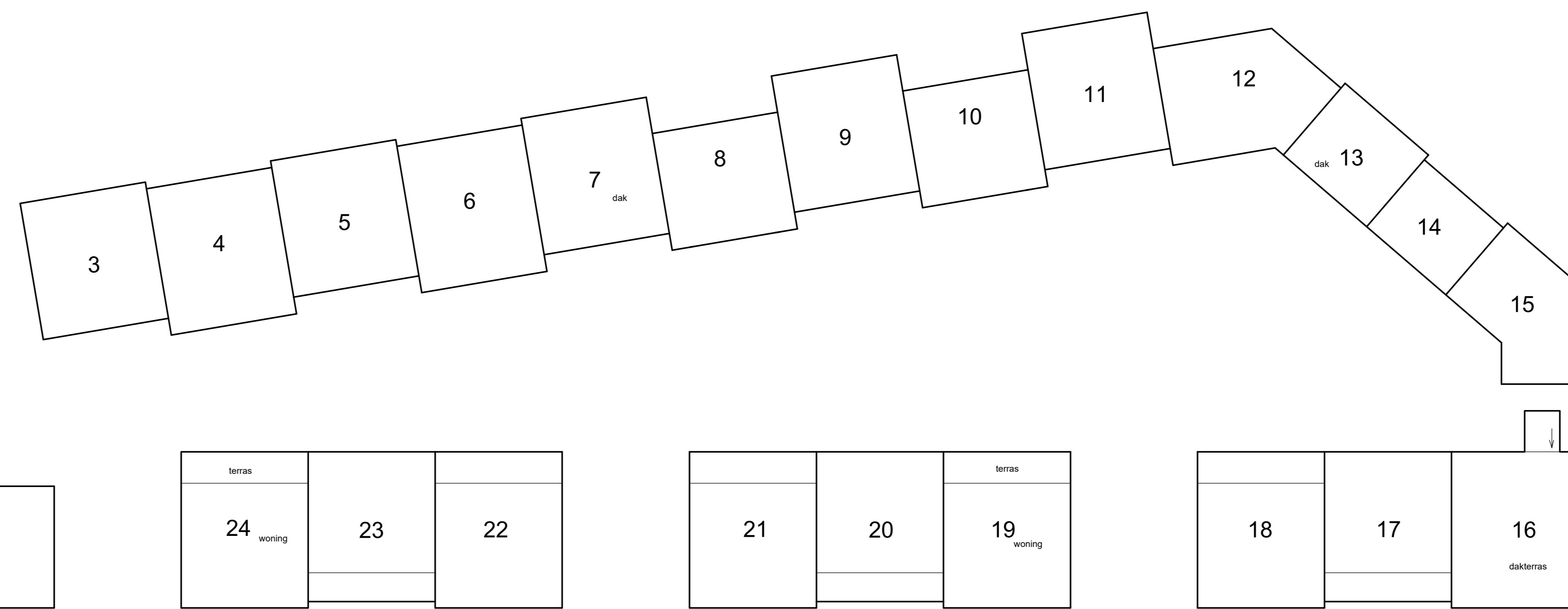
Schaal 1 : 200
□ = Gemeenschappelijk
Tekening bestaat uit 3 bladen
Blad 2



5e etage



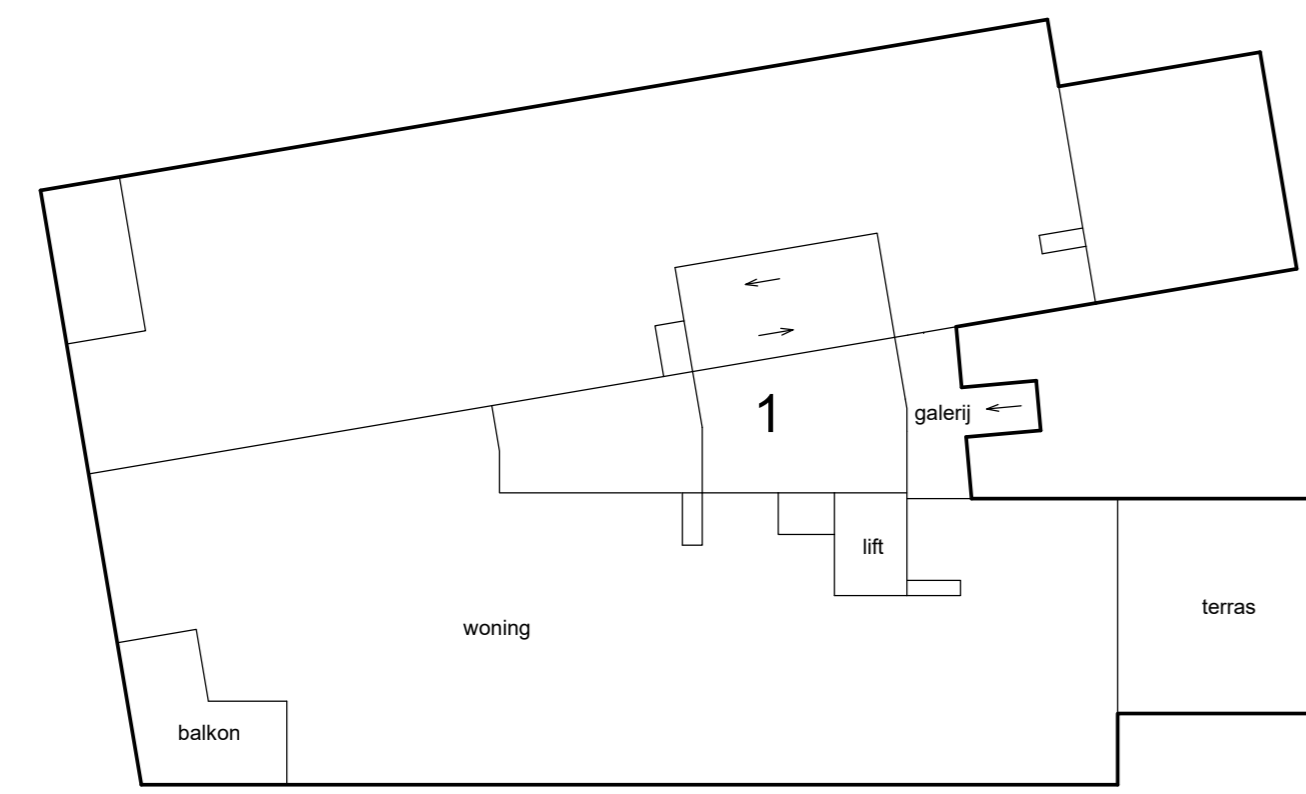
4e etage



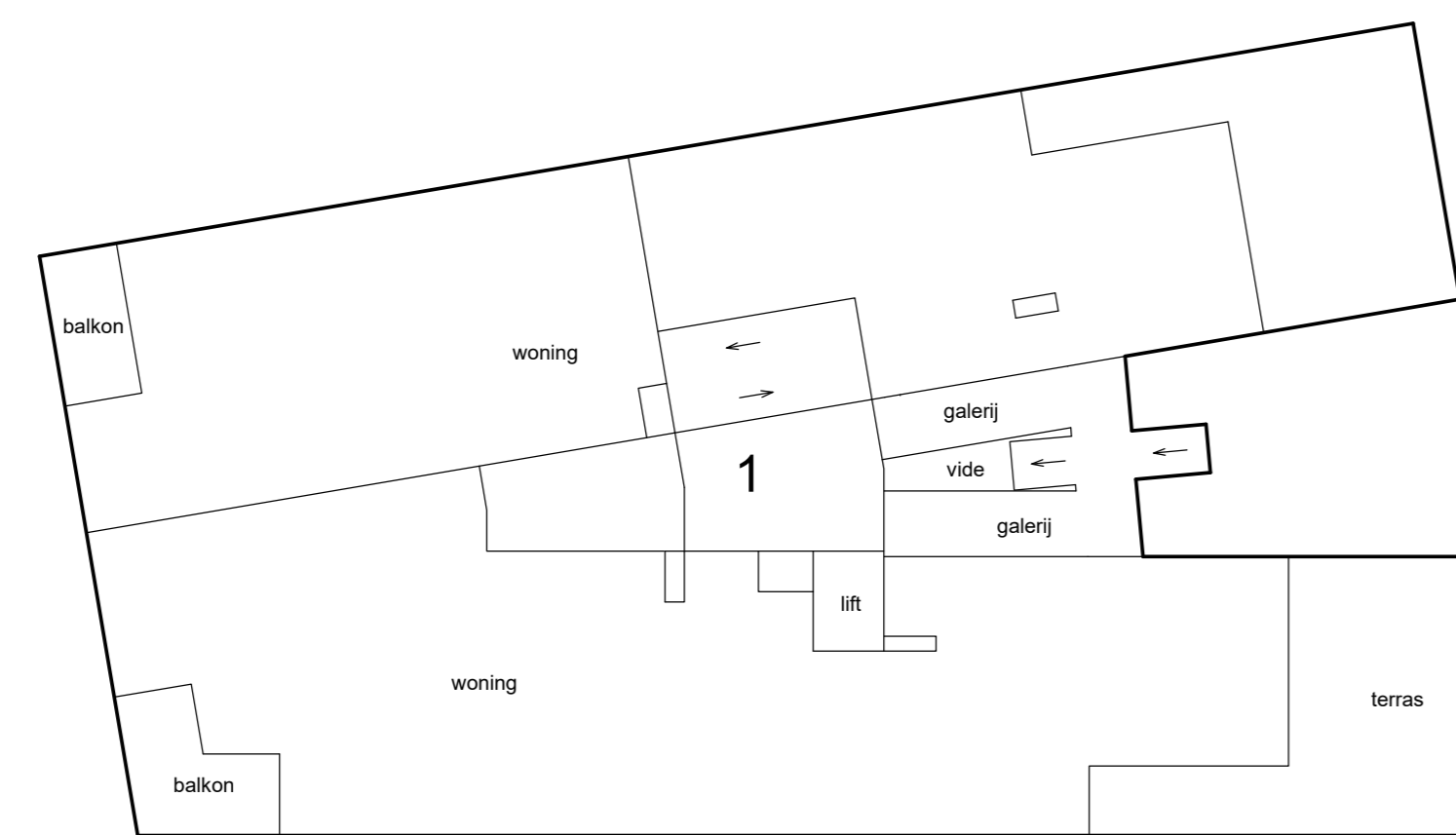
3e etage



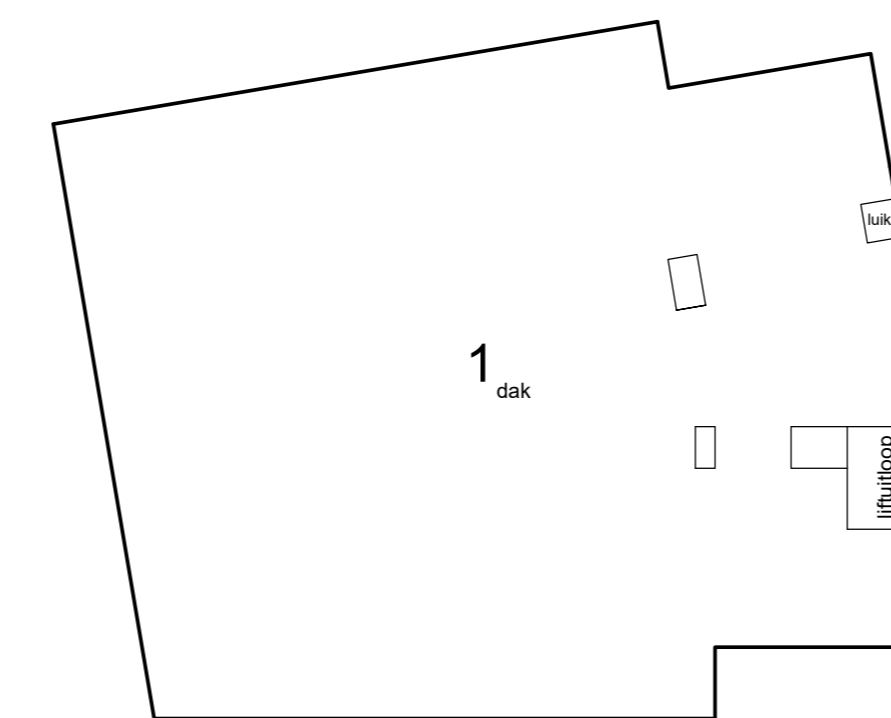
Schaal 1 : 200
□ = Gemeenschappelijk
Tekening bestaat uit 3 bladen
Blad 3



8e etage



7e etage



dak



6e etage



9e etage

